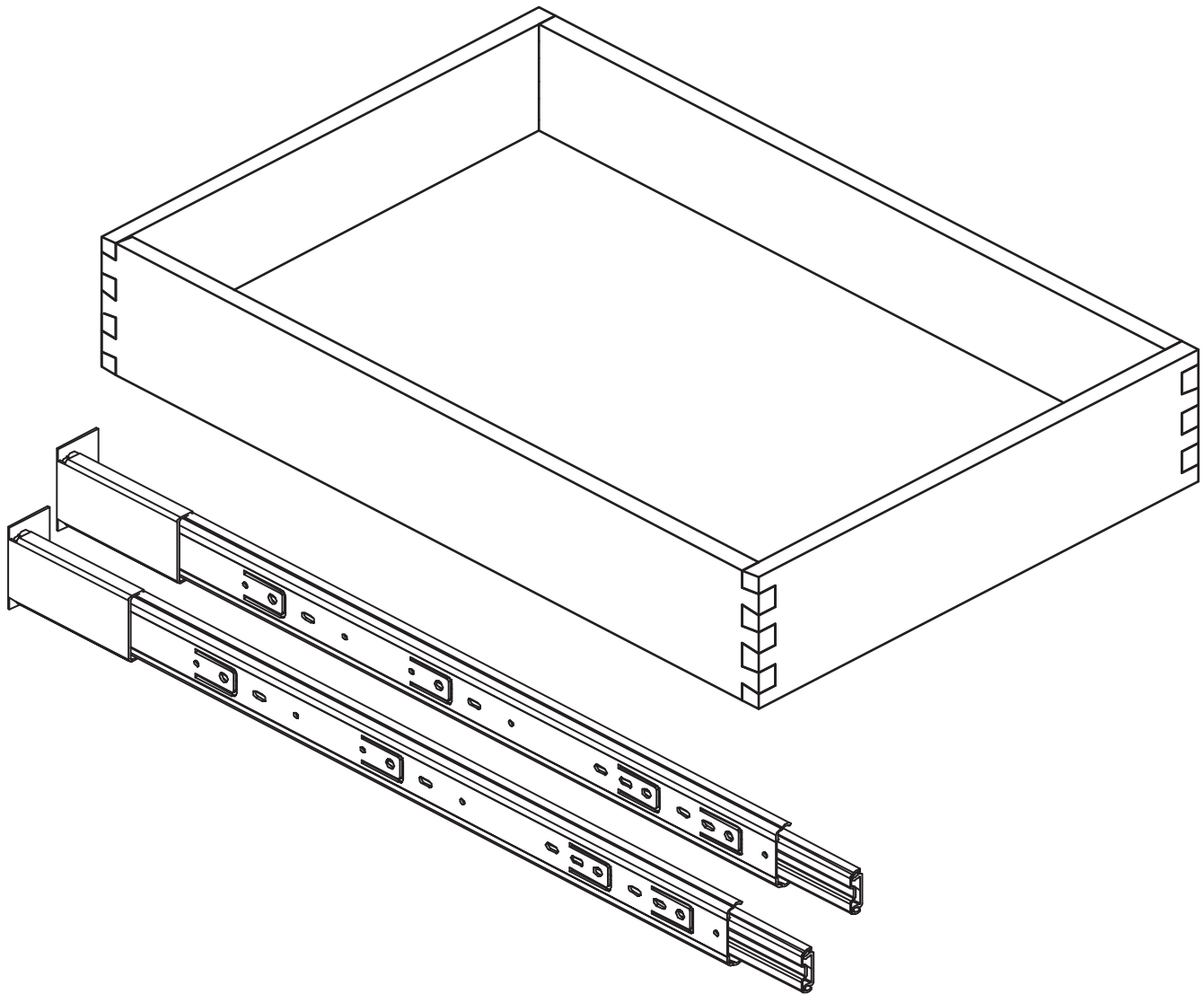


Assembly Instruction

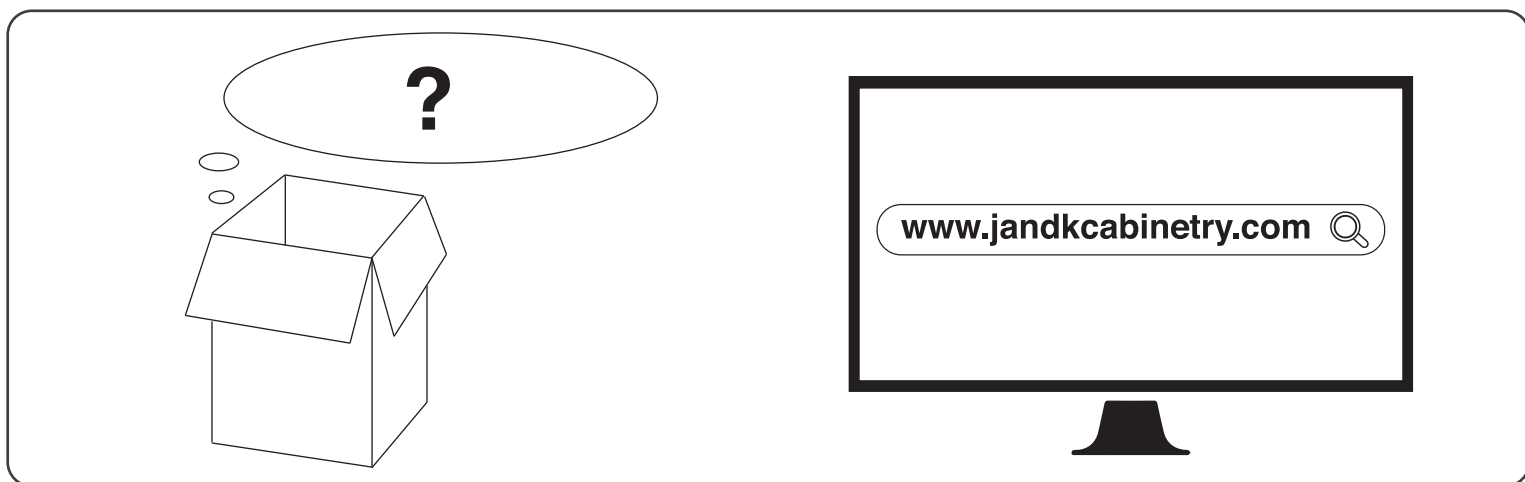
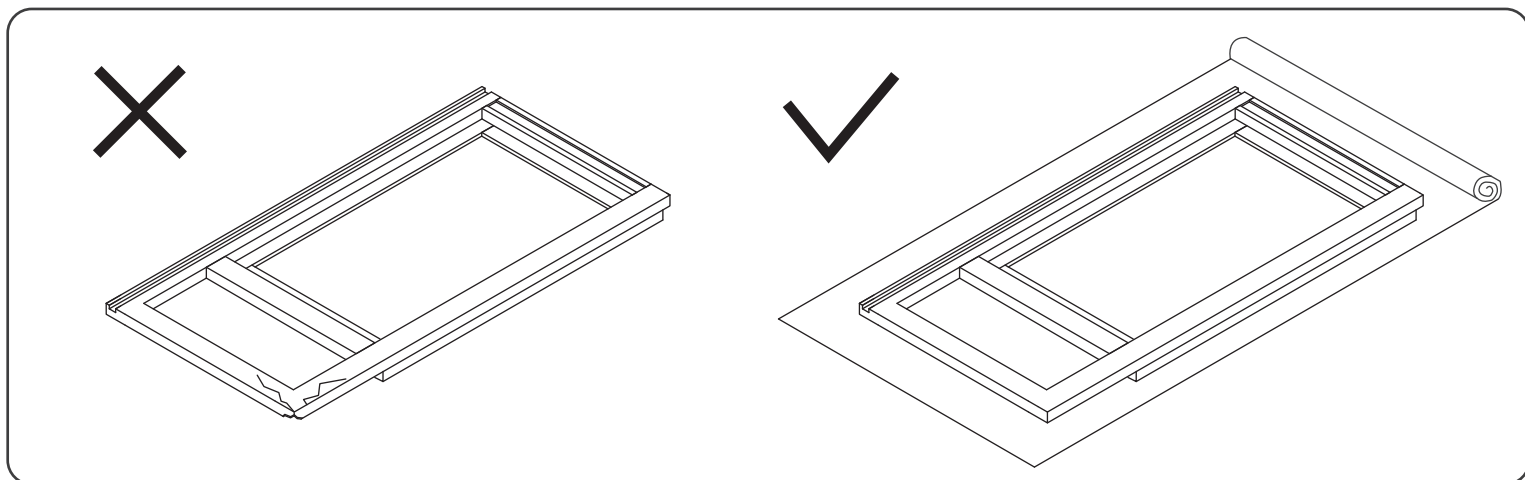
2020 Edition



Roll Out Tray

Item Code:

RD12, RD15, RD18, RD21, RD24
RD27, RD30, RD33, RD36



WARNING:

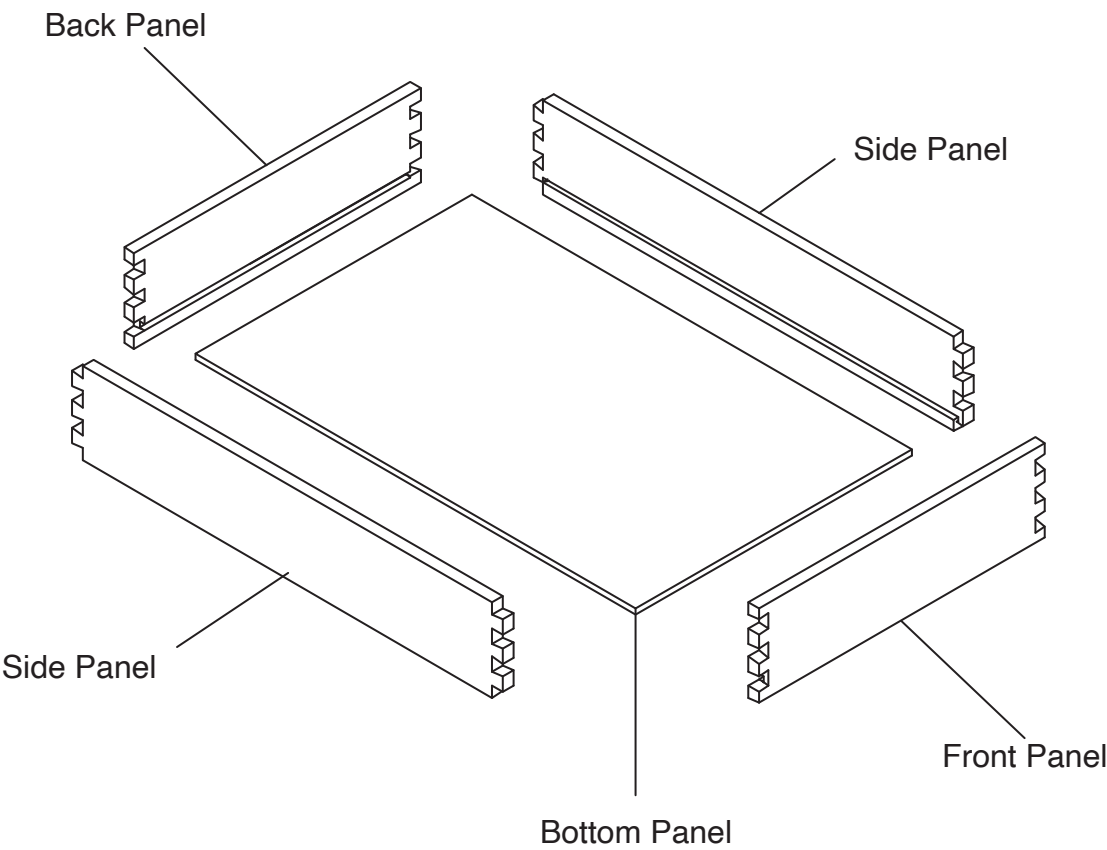
1. Please be careful when opening the box with boxcutter and/or blade.
2. J&K Cabinetry is not responsible for any injuries and/or damages incurred during cabinet assembly.

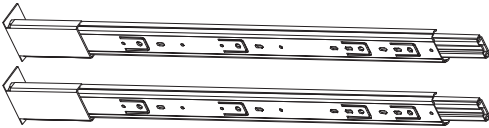



SERVICE:

During the installation process, if you encounter any problems, please go to our official website: www.jandkcabinetry.com, check the full version assembly instruction or watch the assembly video online.

Included Items:



	1/2" 
Side Mount Drawer Glide Kit X 1	Screws X 16

Recommended Tools:



Wood Glue



Screw Driver



Nail Gun



Rubber Mallet

Safety Tools:

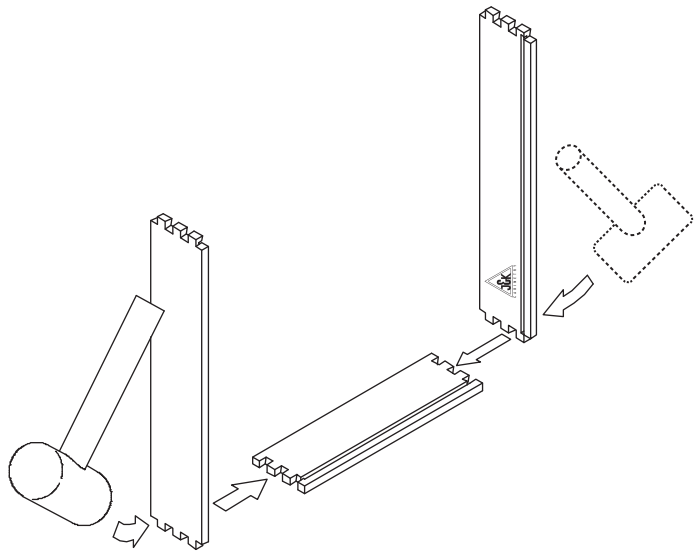


Eye Wear

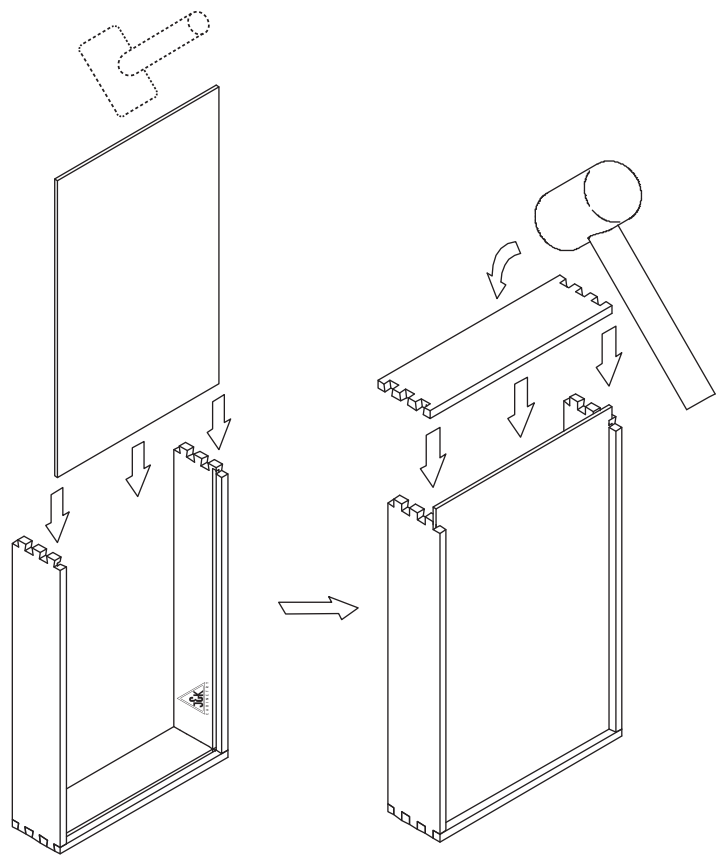


Gloves

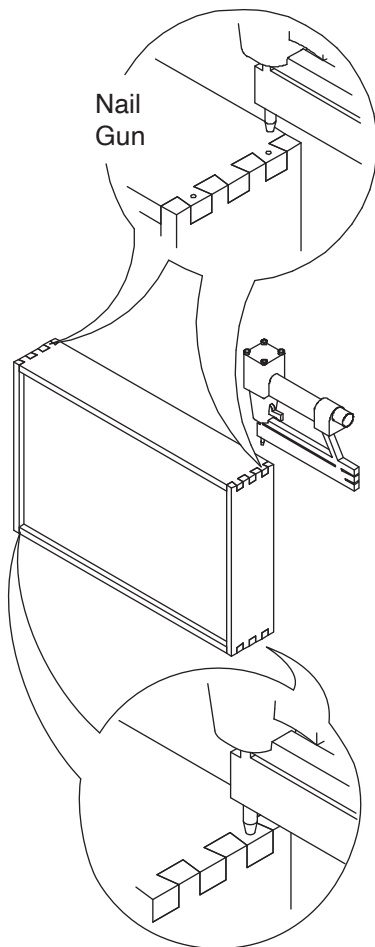
Step 1:



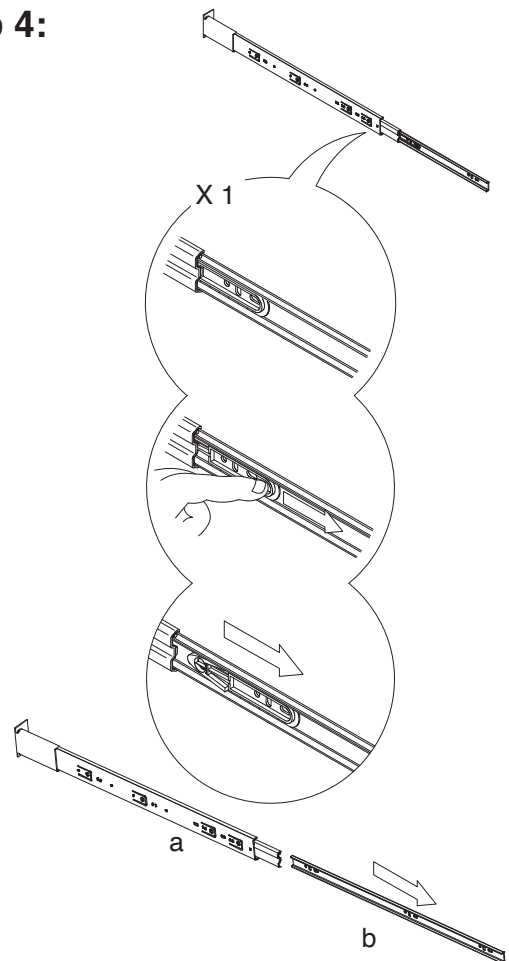
Step 2:



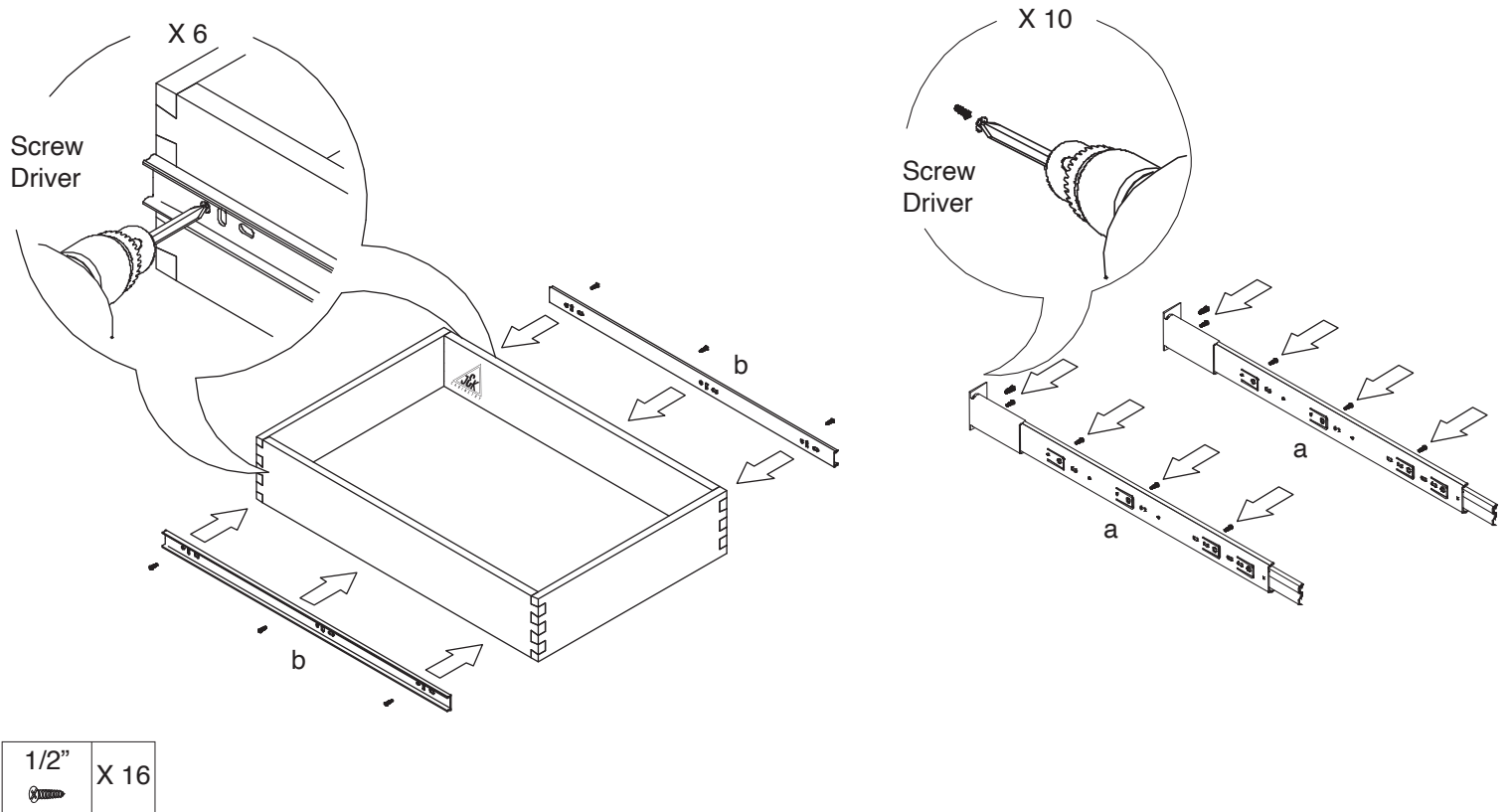
Step 3:



Step 4:



Step 5:



Step 6:

